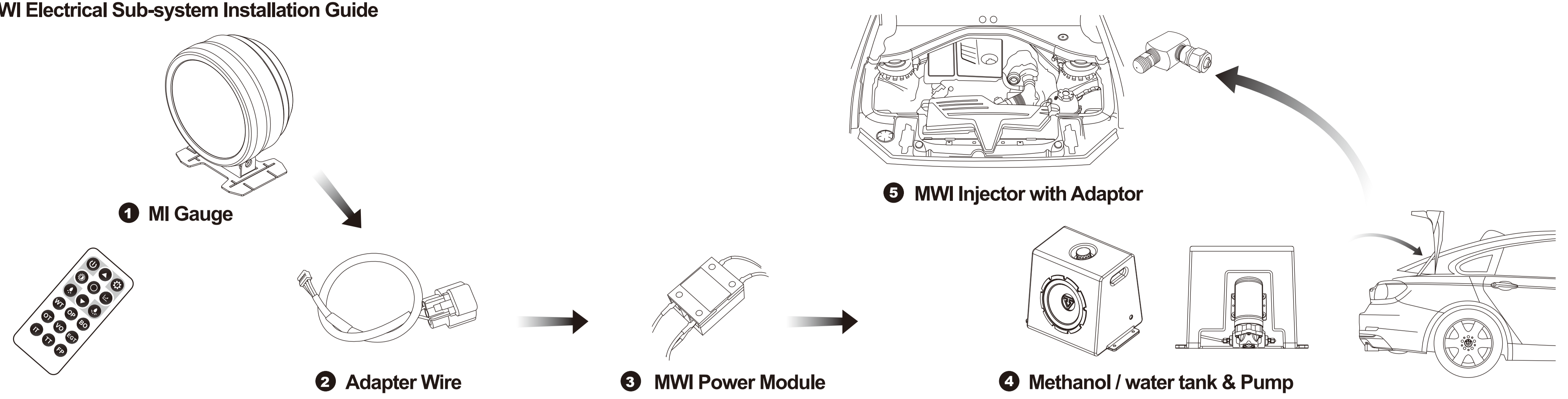


MI Gauge (Methanol/Water Gauge) Methanol Injection Kit Installation Guide

Product Number:
VT-7700050-VT-7700057

Product Name:
MI Gauge (Methanol/Water Gauge)
Methanol Injection Kit

MWI Electrical Sub-system Installation Guide



MWI Fluid Sub-system Installation Guide



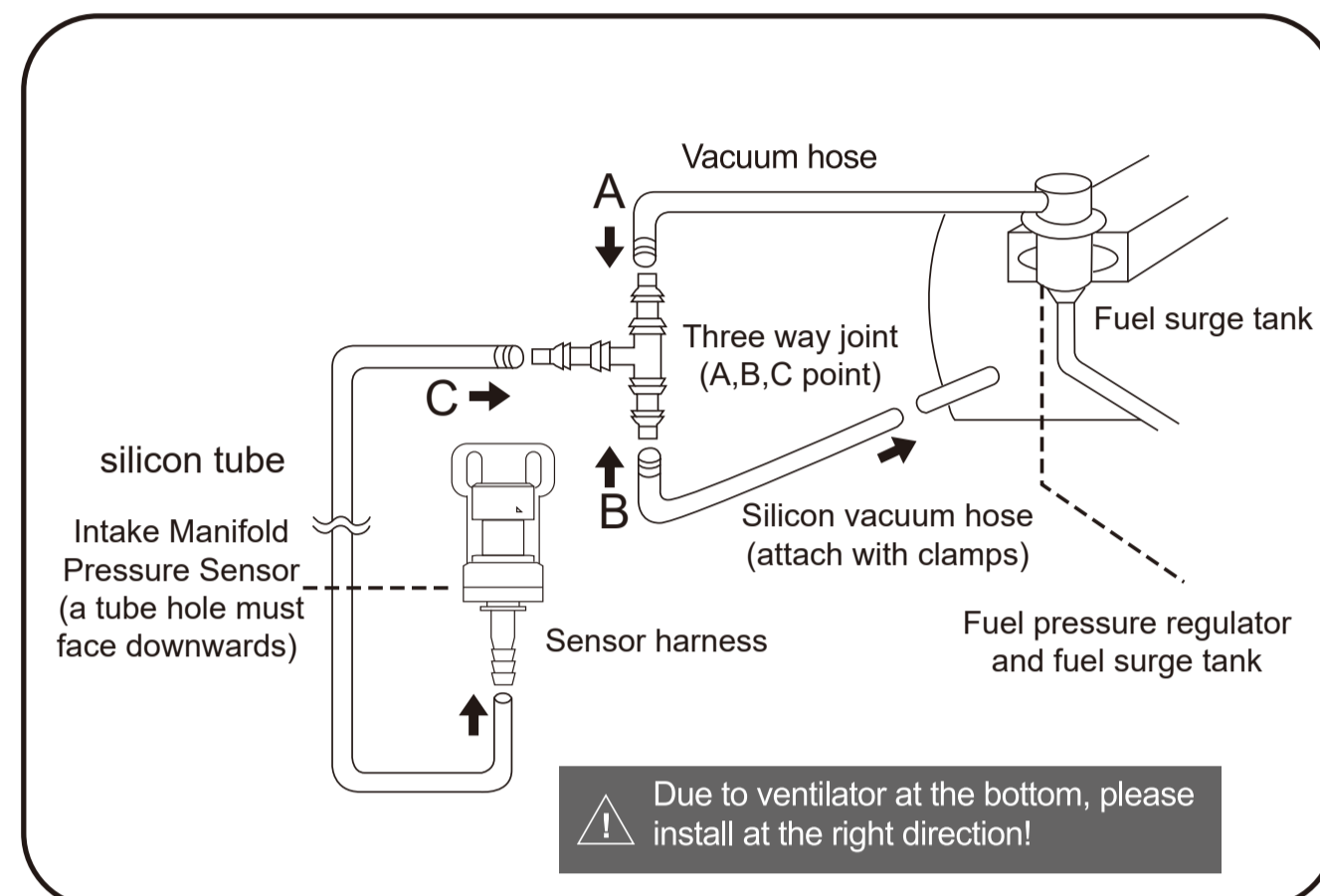
Package Content :

- Methanol/water gauge x1
- METH power wire – DUTY-1 x1
- 400PSI Pump x1
- MWI Injector No.2 (Standard equipped) with Injector Adaptor x1
- 12 L / 3.2 gallon Methanol/water tank x1
- Adapter wire x1
- 6M Teflon reinforced hose x1

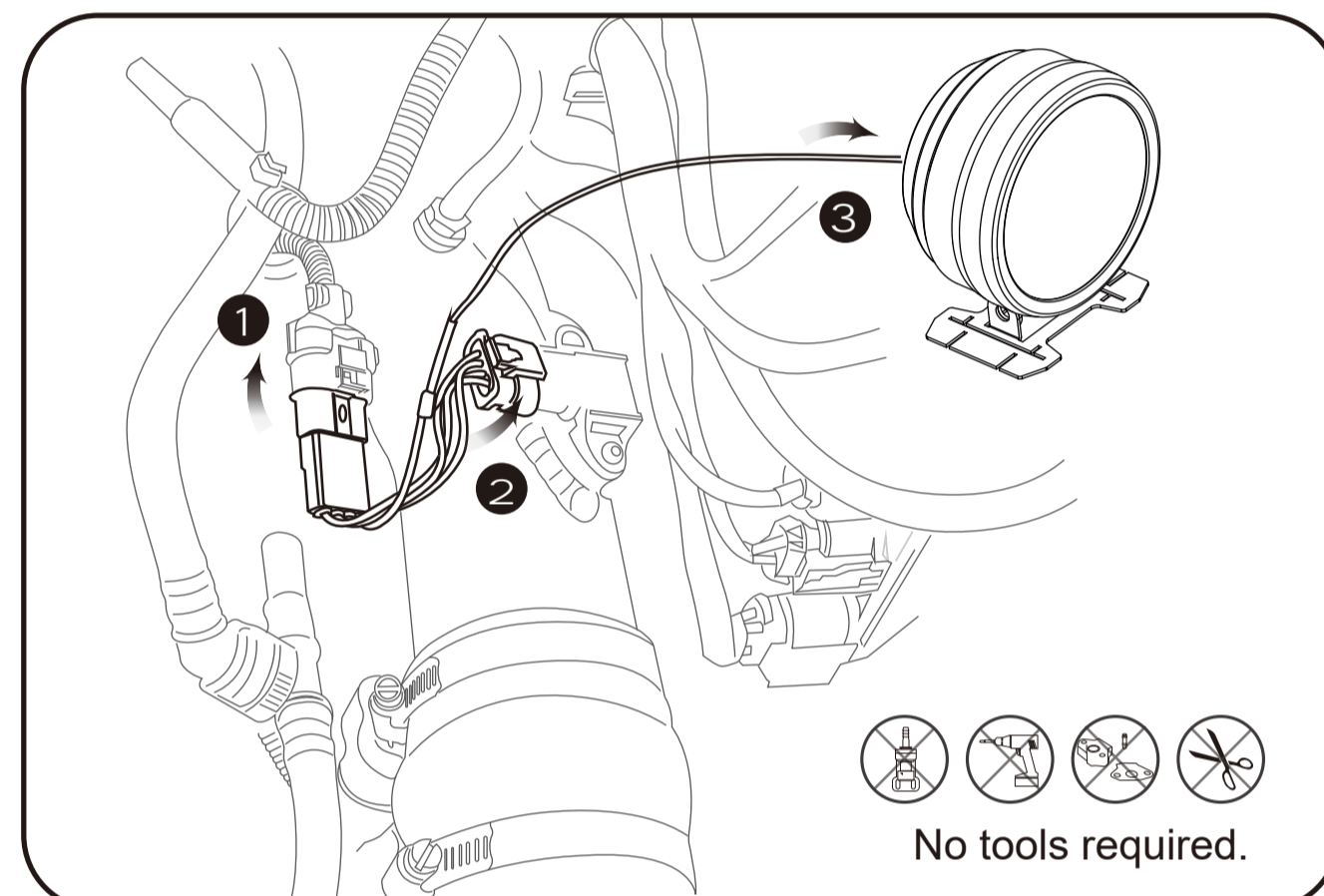
Web QR Code



Sensor Type



Plug & Play



Remote control operation manual

Functional buttons		Power
Warning	Peak	
Up (+)	Down (-)	
Brightness	Enter	
Initial methanol injection	Full methanol injection	

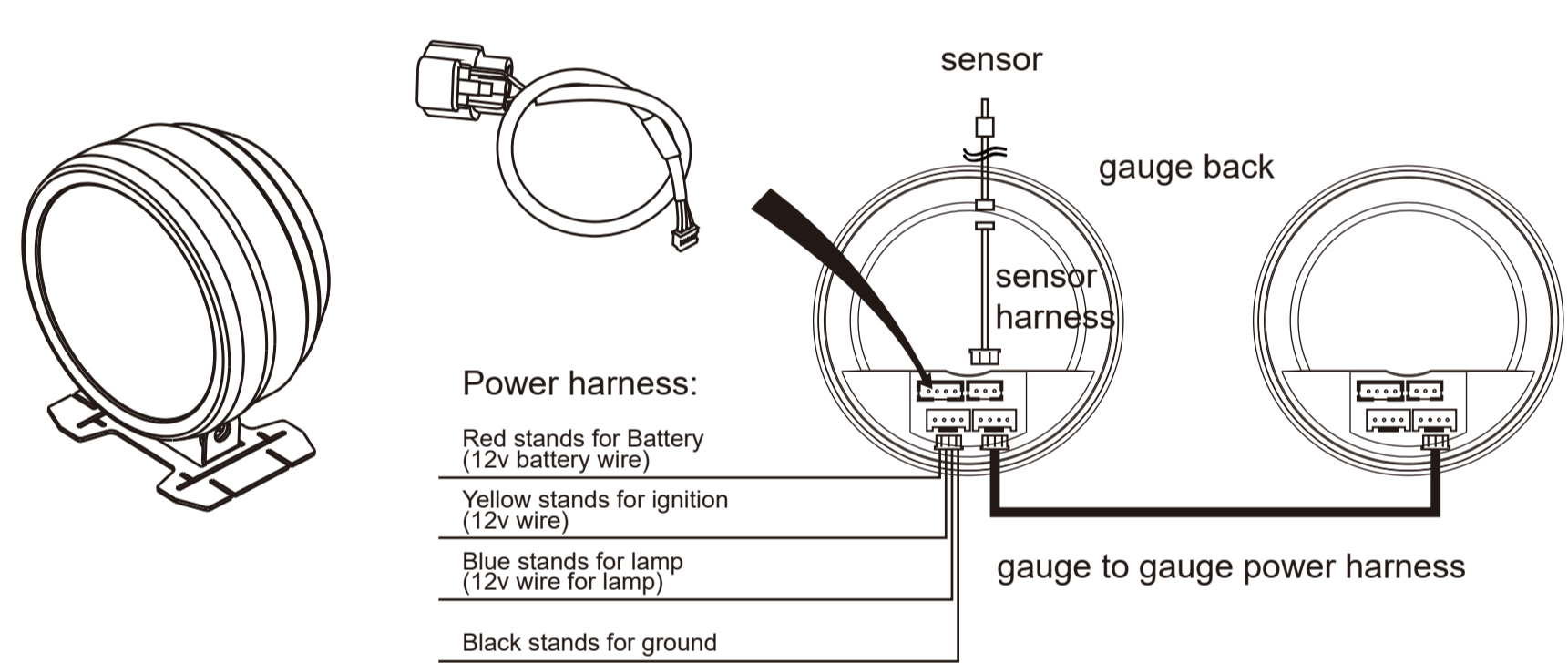
GAUGE MODEL	BO- Booster
WT- Water temperature	VO- Voltage
OT- Oil temperature	IT- Intake air temperature
EGT- Exhaust temperature	TT- Transmission temperature
OP- Oil pressure	FP- Fuel pressure temperature

- Steps to connect:
1. Select gauge model first, the pointer of selected gauge will sweep back to zero and flash, then it will enter the setting mode. (In this status, if there is no action within 30 seconds, it will be required to connect again.)
 2. The functional buttons will be activated only when the gauge enters the setting mode.
 3. Exit setting mode of connection by pressing the ENTER button, or select another gauge model to continue setting up.
 4. Under setting mode, press and hold the BO button or EGT button to enter sensor adjustment mode. (This function is only available for exhaust temperature and turbo gauge)

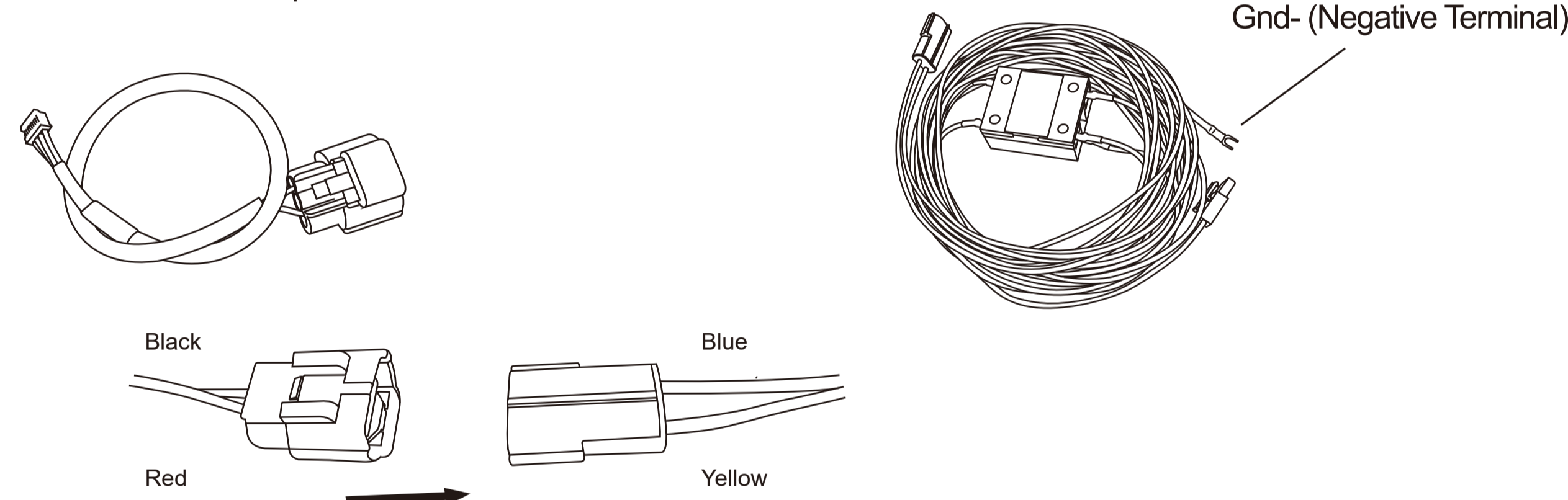
Operation manual	Illustration
<p>POWER: POWER Button: Press to start operation or stop operation. OFF: Press POWER button to turn gauge off under setting mode. ON: Select and press the GAUGE MODEL under OFF mode to enter the setting mode, and the pointer will start flashing. After that, press POWER button to turn gauge on, and if press other GAUGE MODEL will turn the gauge off.</p>	<p>Needle sweeps around... ...while panel flashes</p>
<p>BRIGHTNESS SETTING: (Warning light and Peak light will flash alternately). Adjust the brightness by selecting UP and DOWN buttons (1-2-3 steps) and then press ENTER button to complete setting.</p>	<p>Alternating flashing</p>
<p>INITIAL METHANOL INJECTION SETTING: (Only methanol injection turbo gauge is available) (PEAK light will flash at lower speed) Press UP and DOWN buttons to adjust the pressure of initial injection and then press ENTER button to complete setting. The highest value must be less than the injection value of full power.</p>	<p>Slow blinking</p>

Operation manual	Illustration
<p>FULL METHANOL INJECTION SETTING: (Only methanol injection turbo gauge is available) (PEAK light will flash at higher speed) Press UP and DOWN buttons to adjust the pressure of full power injection and then press ENTER button to complete setting. The lowest value must be higher than the value of initial injection.</p>	<p>Quick blinking</p>
<p>PEAK VALUE SETTING: (PEAK light will come on) Press PEAK button and the recorded peak value will be displayed. Press PEAK button again, the gauge will return to the setting mode and the peak value will be kept. If ENTER button is being pressed, the recorded PEAK value will be deleted and the gauge will return to the setting mode.</p>	<p>Permanent light peak value record</p>
<p>WARNING VALUE SETTING: (Red WARNING light will come on) Adjust WARNING value by pressing UP and DOWN buttons. After setting, the gauge will buzz when the vehicle reaches above or under the setting value.</p>	<p>Permanent light</p>

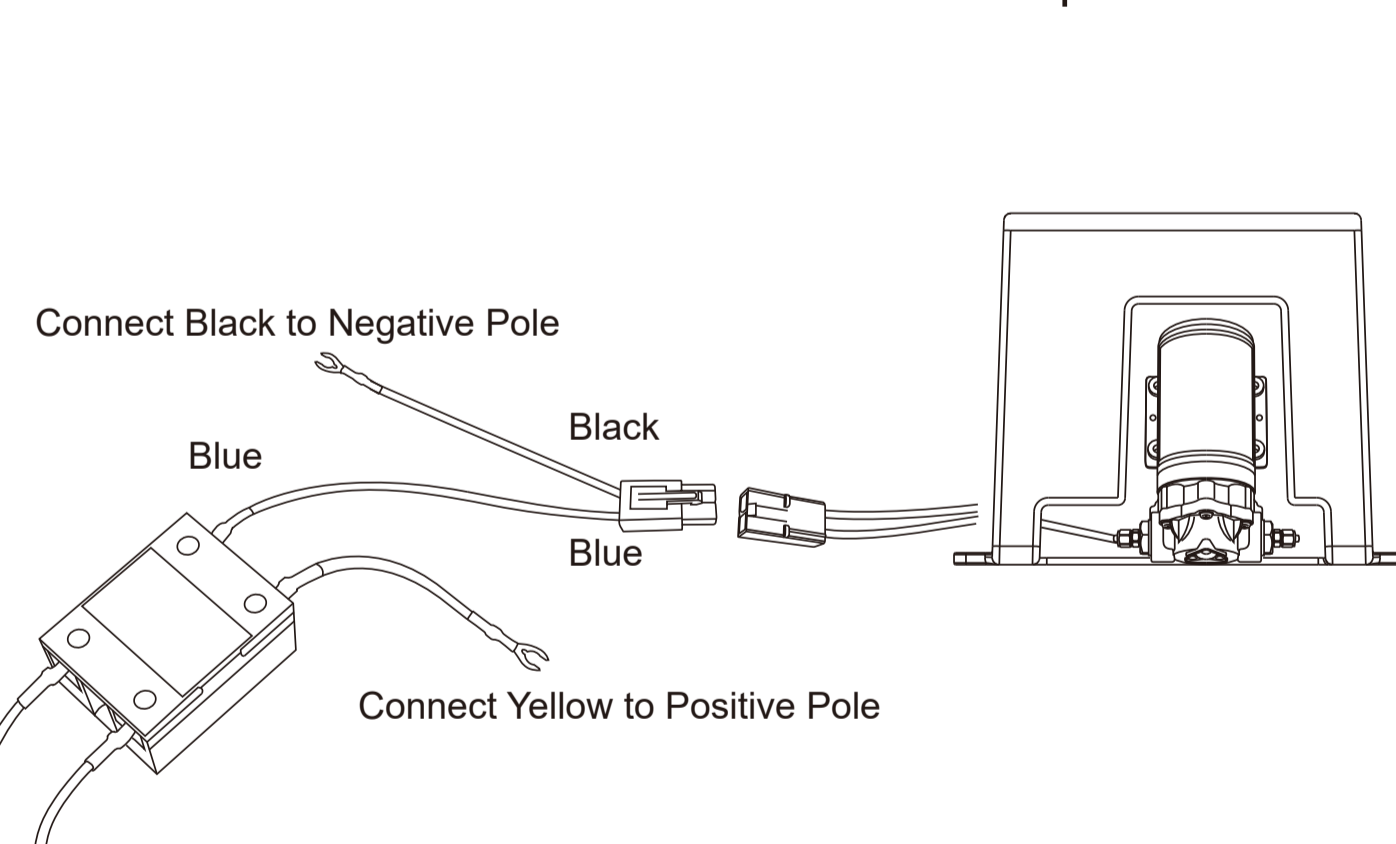
1 Connection Method of MI Gauge (Methanol / water Gauge) & Adapter Wire



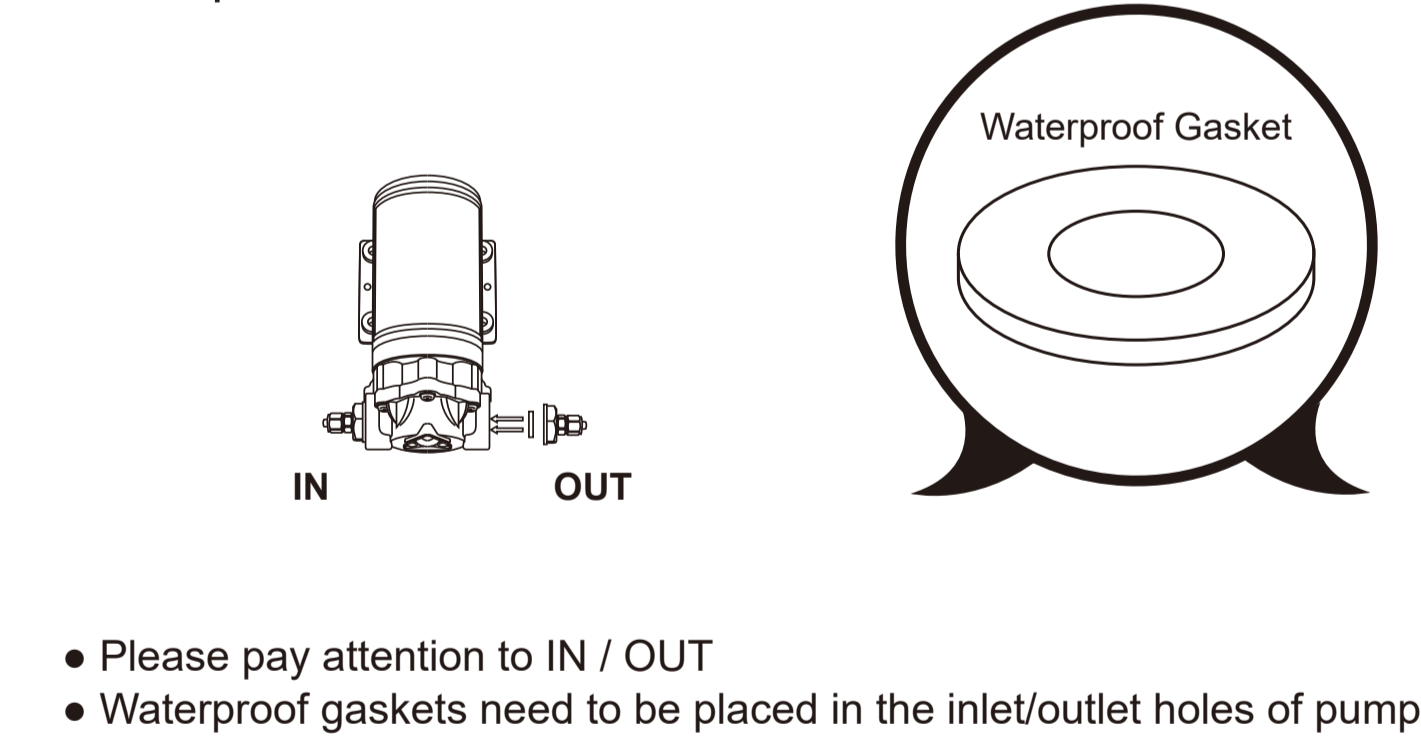
2 Connection Method of Adapter Wire & METH Power Wire – DUTY-1



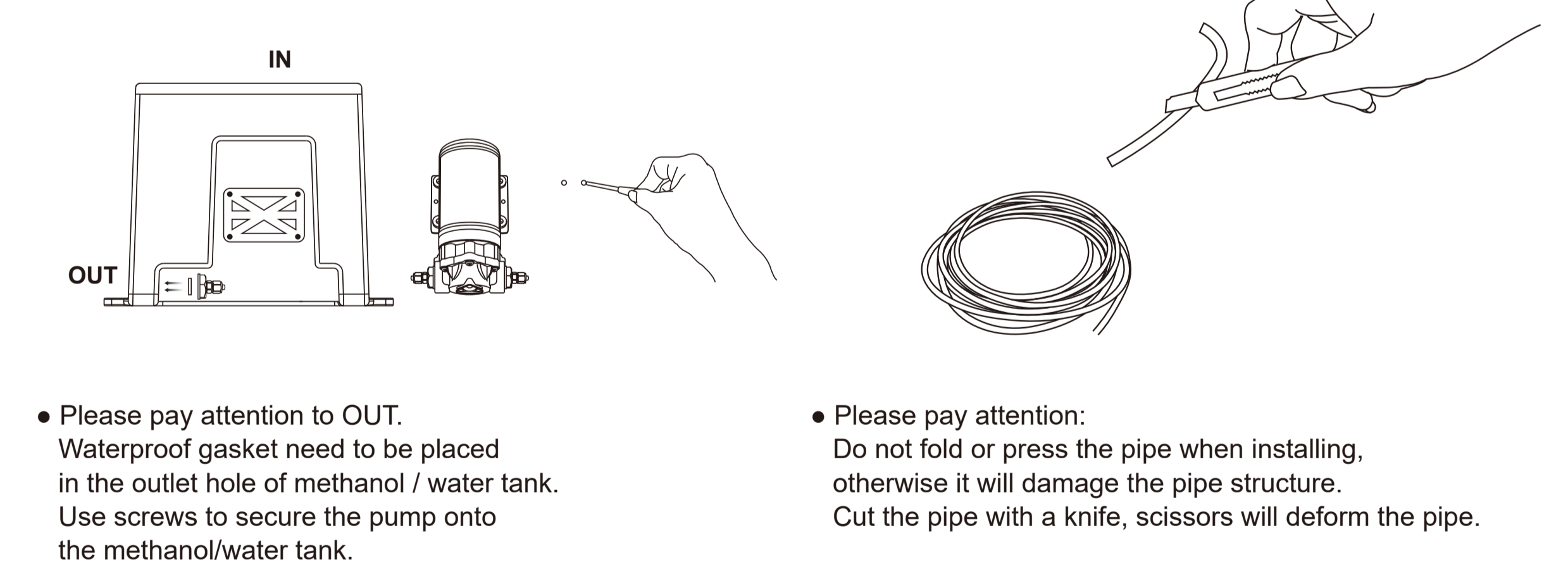
3 Connection Method of METH Power Wire – DUTY-1 & Pump



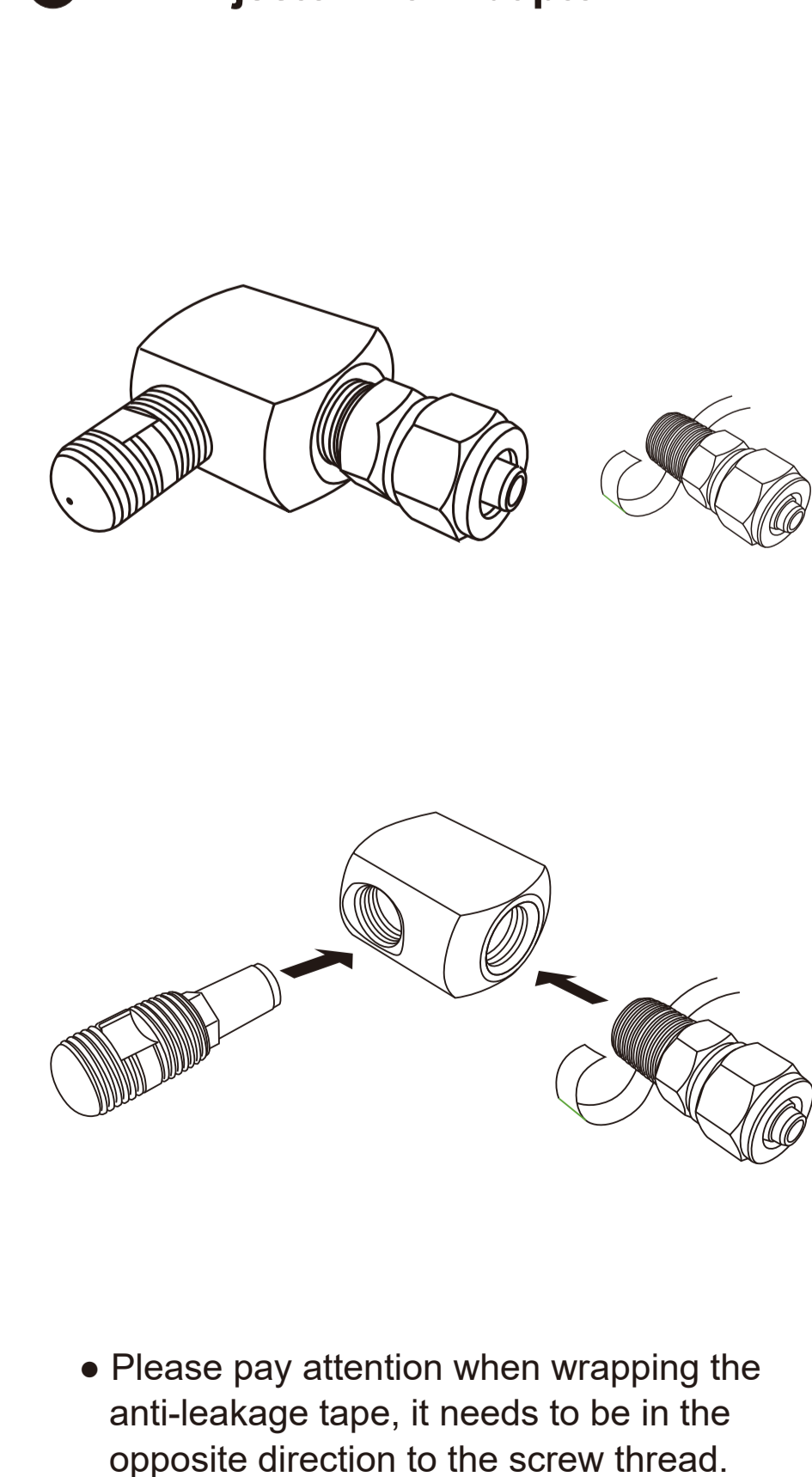
4 Pump



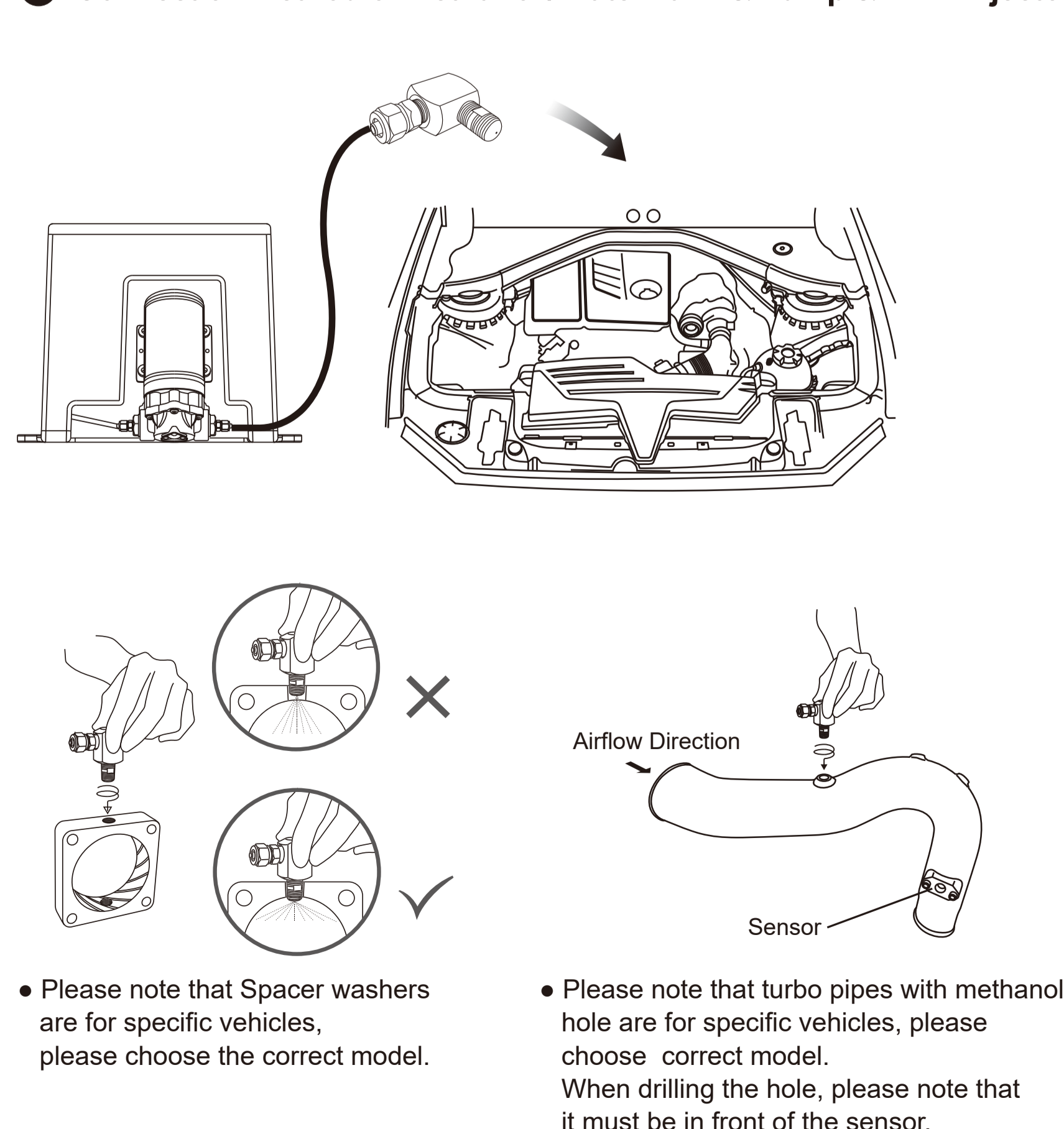
5 Methanol / water tank



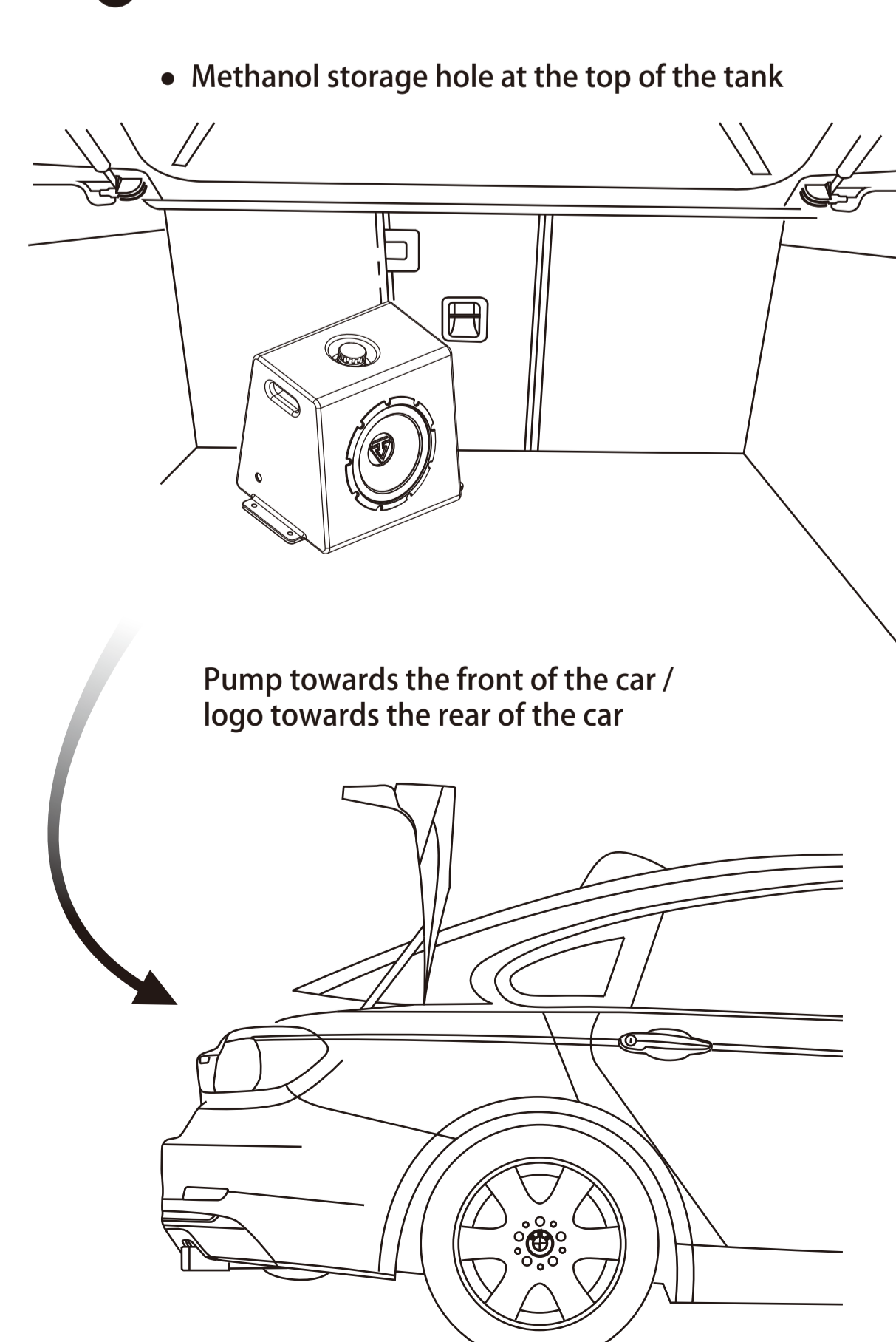
6 MWI Injector with Adaptor



7 Connection Method of Methanol / water Tank & Pump & MWI Injector



8 Place in the rear trunk



- ⚠ To prevent damage to the vehicle, please use only higher than RON97 unleaded petrol or high-grade diesel fuel.
- ⚠ After installation, maintenance period needs to be shortened. It is suggested to maintain the car every 6 months or 5,000 km.
- ⚠ To avoid damages to an engine and components, it is recommended to replace cold spark plugs every 10,000 km.
- ⚠ Do not disturb safety equipment such as seat belt, airbag system or car devices (e.g., Engine control system, wheel and brake system.) when installing the product. Disturb above devices may cause unpredictable accidents or fires.
- ⚠ In any case, VAITRIX shall not be responsible for any damage or loss to the factory components after installation of the product. In any case, VAITRIX shall not be responsible for any damage caused through the use (or not available to use) of the product and even VAITRIX is informed that possible damages may occur.